

## Palatal Knife

acc. to Dr. med. dent. Iman Mizani, MS



## Palatal Knife

acc. to Dr. med. dent. Iman Mizani, MS

The novel Palatal Knife offers an innovative alternative to the conventional scalpel for the preparation of connective tissue graft.

The special design of the instrument promotes faster and safer graft removal.

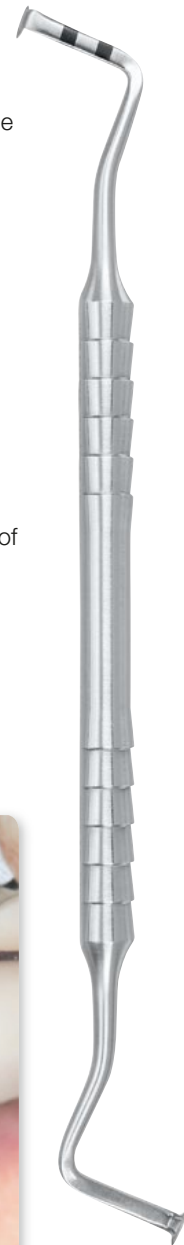
At the same time, the risk of injury to the palatine artery and perforation of the palatal flap is minimised.

### Special features:

- angled cutting edge, perpendicular to the palatinal bone
- ergonomic, angled instrument neck / shaft
- depth gauge (graduation) for precise dimensioning

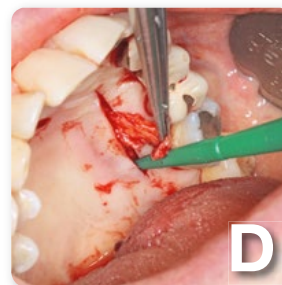
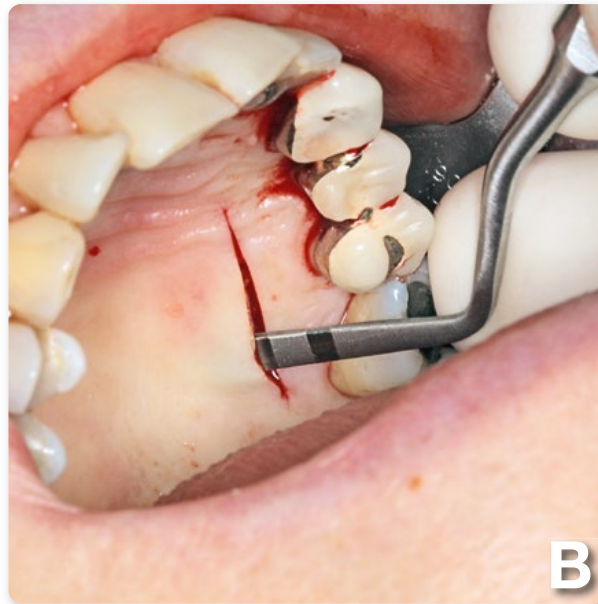
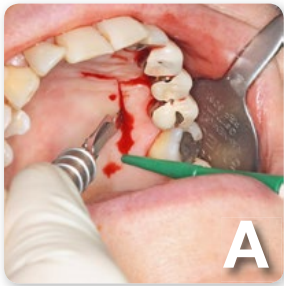
### Advantages over conventional removal methods:

- enhanced safety through reduced risk of injury to the palatine artery and perforation of the palatal mucosa
- simple and ergonomic handling
- fast, precise preparation of the graft
- consistently uniform thickness of the connective tissue graft
- abrading work and cutting in difficult-to-reach places



**46.040.15**

Palatal Knife  
acc. to Dr. med. dent.  
Iman Mizani, MS



AESTHETIC IS THE RESULT