

EASY CONTACT POINT Instruments by **HELMUT ZEPF**

Instruction for use of the EASY CONTACT POINT Hand Instrument



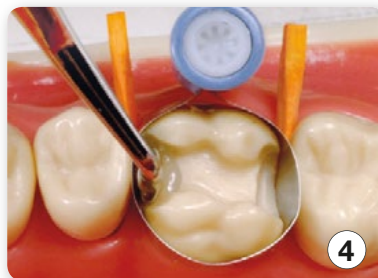
Use the instrument 26.123.01 for premolars, 26.123.02 for molars.



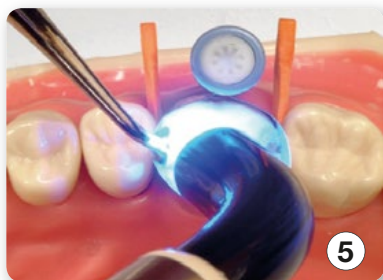
After preparation of the cavity, placing the matrix band and fixation with wooden wedges.



Primer and Bonding has been placed, insert a little piece of composite into the cavity, do not stuff!



When putting the instrument into the composite, while pressing the instrument against the matrix band, the contact point is formed.



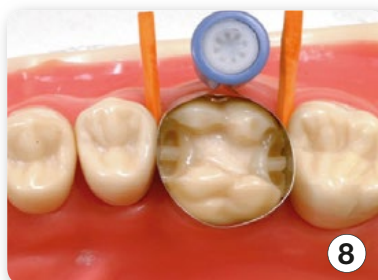
During the illumination with the polymerization lamp, instrument remains within the cavity.



Mesial contact point finished. Insert a piece of composite into the distal cavity, do not stuff!



The distal contact point is prepared (repeating steps 4-6).



Both contact points are finished.



26.123.01



26.123.02



Instruction for use of the EASY CONTACT POINT Pliers

26.122.00



26.122.10



9

When using the pliers, both contact points are prepared in the same step. Thus, insert pieces of composite mesially and distally into the cavity (26.122.00 premolar / 26.122.10 molar).



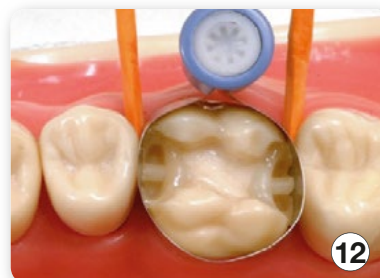
10

The contact points are getting formed while put into the pieces of composite and spread against the matrix.



11

Pliers remain within the cavity in spreaded position until illumination with the polymerization lamp is done.



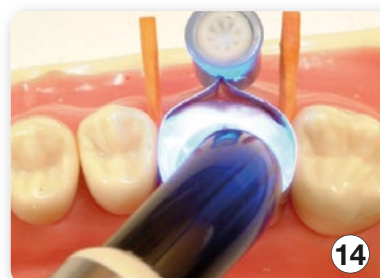
12

Remove the pliers. Contact points are fixed within the matrix band.



13

Filling the cavity in layers. It might be an advantage to use a flow composite for closing the small stamps, resulting from the instruments tips, prior to the filling of the final layers (Thus, air inclusions are prevented).



14



15

Filling up with final layers from the lingual side and hardening.



16

The result.

EASY CONTACT POINT Instruments by **HELMUT ZEPF**

Composites are not easy to process. The modeling of clinically ideal contact points in particular is a big challenge for the practitioner.





The Easy Contact Point Instruments will help to simplify this work step.

These instruments are available in two sizes as pliers for MOD filling, i.e. as premolar and as molar pliers.

To be used as hand instruments for MO or DO fillings. Also available in two sizes for premolars and molars.

The treatment period for a composite filling can therefore be considerably reduced.

The related economic benefit is evident.

Illustration	Article Description	Order Quantity
	<p>26.122.00</p> <p>Easy Contact Point MOD Pliers for premolars for perfect contact points while preparing a composite restoration</p>	<p>1 piece</p>
	<p>26.122.10</p> <p>Easy Contact Point MOD Pliers for molars for perfect contact points while preparing a composite restoration</p>	<p>1 piece</p>
	<p>26.123.01</p> <p>Easy Contact Point Instrument for premolars, 3.1 mm wide, for forming the contact points in MO or DO restorations, in BIONIK handle, black</p>	<p>1 piece</p>
	<p>26.123.02</p> <p>Easy Contact Point Instrument for molars, 3.8 mm wide, for forming the contact points in MO or DO restorations, in BIONIK handle, yellow-green</p>	<p>1 piece</p>



AESTHETIC IS THE RESULT