

**onyx** Hand Instruments  
DESIGN



Based on the motto "WORK SMART – NOT HARD", selected instruments for dental surgery are now provided with **ZEPF onyx** Coating. The black coated **onyx** Instruments, in the ergonomic **BIONIK** handle each, dispose of a durable, very hard and impact-resistant surface with excellent sliding qualities.

The extremely hard surface guarantees a long stability of the cutting edges, and a regular re-sharpening is no longer required. The black, scratch-proof surface is easy to clean and avoids unpleasant light reflections. Furthermore, a drying of impurities is avoided due to the smooth surface.



24.751.154OX



Raspatory round / flat

24.748.52OX

24.751.159OX



Raspatory, bent 90°, slim version. Very well suited for the first dissection of sinus mucosa, before mobilization with the blunt elevator

24.747.03OX

24.751.295OX



Molt Curette Combination of CM4 / CM7, # 4 Ø 3.5 mm / # 7 Ø 7.0 mm

24.204.35OX

24.751.517MOX



Lingual Raspatory Combination Back Action for optimal lingual and palatal access

24.747.07OX

24.751.524MOX



Tunneling Instrument, excellent contrast in the soft tissues when tunneling in the upper jaw

46.040.01OX



The **onyx** coating is applied to the carrier material in a more gentle way than conventional procedures, as there is less influence of heat. This coating is more durable, harder and impact-resistant. It also presents excellent sliding qualities favoring the care of the instruments. An incrustation of proteins etc. is not possible. Dirt can be wiped off. Even if the cutting edge does not appear black, the coating is nevertheless integrated in the surface.

\*ATTENTION: Periostomes are not designed for leverage and lateral strain. Wrong use can lead to the damage of the instrument. The blade must always be lead through the sulcus in pulling. Refrain from lever actions with this delicate instrument.

24.751.523MOX



Tunneling Instrument, excellent contrast in the soft tissues when tunneling in the lower jaw

46.040.02OX

24.751.521WOX



Weng Papillex – the papilla elevator with the special bend, to prepare the papilla in a smart way

46.035.05OX

26.182.33OX



Periotome Combination Instrument, optimal surface hardness and best contrast\*

26.182.23OX

24.751.512OX



Back -Action Raspatory as bone scraper with dissection tip. This tip serves to present individual layers of tissue in an atraumatic way (dissection) during the preparation of the soft tissue

24.748.35OX

41.751.012LUOX



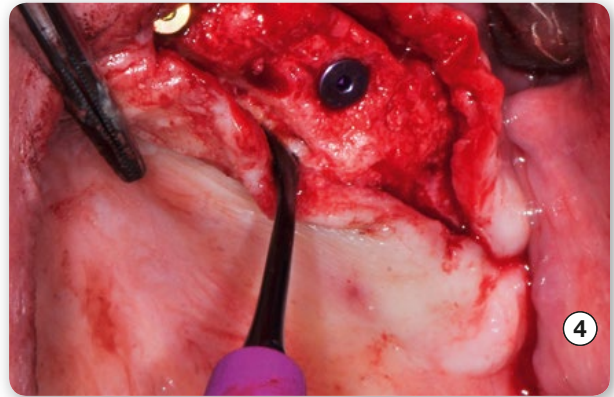
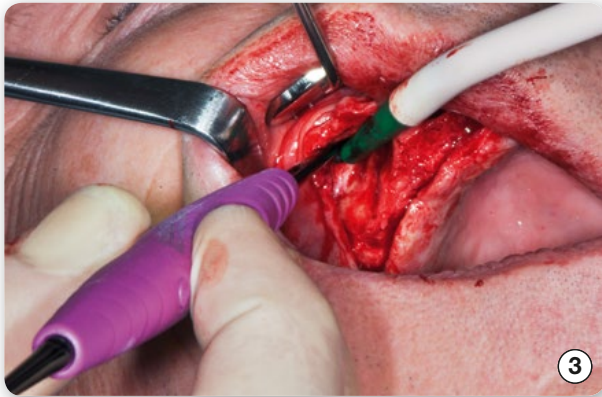
Lucas Scraper, delicate version, to clean the extraction alveolus and to remove granulation tissue

24.748.38OX



### Application Pictures

from Dr. Claus Fuchs, Konstanz-Litzelstetten / Germany



AESTHETIC IS THE RESULT

